



MICHELIN
INFLATABLE SOLUTIONS

SMARTSHELL



INSTRUCTION MANUAL



This file contains all our recommendations to guide you in the use of your new MICHELIN Inflatable Solutions product.

We recommend that you read it carefully before using your product for the first time, and refer to it if you have any doubts.

Our sales team remains at your disposal for any further information (e-mail: commerce@aircaptif.com).



CONTENTS

I. Checking the contents of the delivery	4
II. Legend	5
III. Features	6
IV. Installation	7
V. Dismantling	12
VI. Maintenance	14
VII. Warranty conditions	16



I - VERIFICATION OF CONTENTS ON DELIVERY

Elements included in a PACK :

- 1x carry bag (A)
- 1x inflatable structure (B)
- 2 x pediments + 2 x doors (C)
- 1x high flow pump (D)
- 1x repair kit (E)
- 6 x guy ropes (F)

OPTIONAL elements :

- Ballast bags (G)

4



(A)



(B)



(C)



(D)



(E)



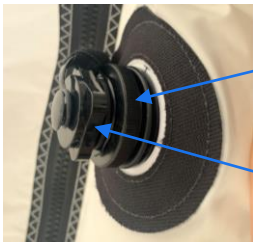
(F)



(G)



II - LEGEND



Lower crown, plug without non-return valve for deflation

Upper crown, plug with non-return valve for inflation



"Clamp open: allows air to pass through (position when inflating/deflating)



"Clamp closed: does not allow air to pass through (position when structure is inflated)



III - CHARACTERISTICS



Module 4m	
Inside length	9m
Inside width	4m
Maximum height	3,7m
Weight	60kg





IV - INSTALLATION

Installation **takes around 20 minutes**, and only two operators are needed to assemble and dismantle the SmartShell shelter.

1. Remove the shelter from its carry bag



2. Laying out the inflatable on the ground

7

- ✓ Laying out the inflatable on the ground.

The more the structure is spread out, the faster it inflates.





IV - INSTALLATION

3. Assembling the modules

- ✓ Zip the modules together. Refer to the labels to zip the modules in the right direction. The red labels must be assembled, and the same applies to the green labels.



8

4. Open all the clamps and close all the caps

Make sure **all the clamps are open**.

*Inside each structure are several inflatable bladders connected together by tubes that can be closed with clamps. Together they form **the "OnePump" system**.*

This system allows you to inflate the module at a single point (when the clamps are open), but also to block the propagation of any loss of pressure on one of the tubes (when the clamps are closed).



"Clamp" open : allows air to pass through (inflate/deflate position)



"Clamp" closed: does not let air through (position when the structure is inflated)





IV - INSTALLATION

- ✓ Close all the plugs on the structure.



Warning : Never open the zip that gives access to the bladder.



5. Installing the cover

- ✓ Zip the cover over the structure, making sure it is zipped in the right direction using the colored labels.

9



WARNING :

Before inflating the structure, make sure that all the ZIPS on the pediment doors are open to remove any stress from the curve of the structure and avoid tearing.



Zips to leave open





IV - INSTALLATION

6. Inflating the structure

- ✓ Unscrew the top crown of the plugs to insert the inflation pumps. Two pumps are required per module.



- ✓ Start inflation by pressing the pump's "main motor" mode (yellow button) and allow the air to spread for 1 to 2 minutes.
- ✓ Then press the pump's "boost" mode (red button) to continue inflation.
- ✓ Lift the structure to give it its curved shape.



10



The structure is inflated when it is rigid.

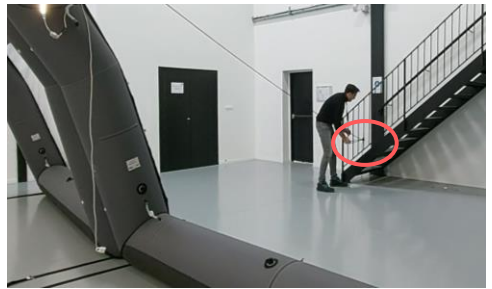
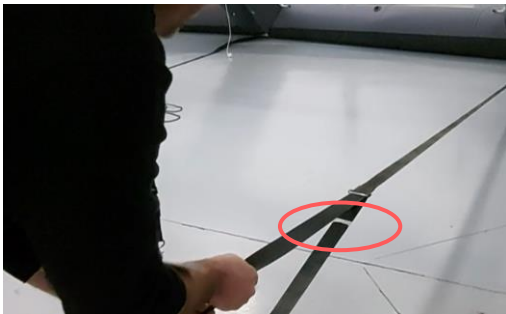
- ✓ You can then turn off the pump and close the plugs.



IV - INSTALLATION

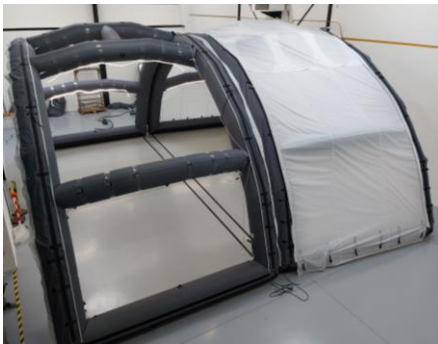
7. Securing the structure

- ✓ Attach the two straps of each module up to the mark (line on the strap).
- ✓ Ballast the structure using the ballast bags.
- ✓ Secure the structure using the guy ropes.

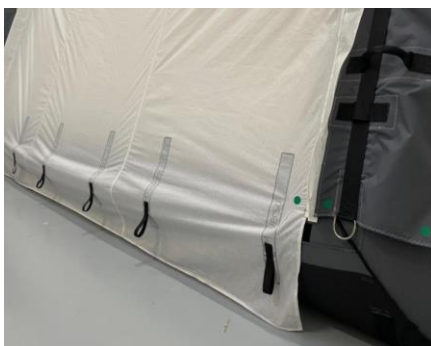


11

- ✓ You can now switch on your structure's LEDs.



- ✓ Secure the cover with the Velcro fasteners. Make sure the cover is taut.





V – DISMANTLING

Dismantling takes around 5 minutes.

1. Deflating the structure

- ✓ Before deflating, open all the clamps.
- ✓ Switch off the LEDs (if present), then detach the straps holding the curved structure in place.
- ✓ Deflate the structure by unscrewing the lower crown of the plugs.



12

WARNING : Do not attempt to deflate the structure with the inflation pump! You risk damaging the plastic inner tube that is slipped inside each flange.

- ✓ Remove the cover by unzipping it.





V – DISMANTLING

2. Folding the structure

- ✓ Once the structures are spread out on the ground, separate the structures, then dismantle and fold back the covers.



- ✓ Fold the structure in on itself.



13

- ✓ Roll up the structure and slide it, folded, into its carry bag.





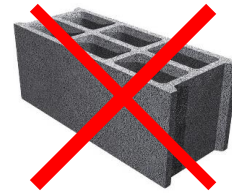
VI – MAINTENANCE

1- Uses involving risks

- ✓ Do not use machinery or sharp equipment near the shelter, as this could damage it.



- ✓ Do not use abrasive ballast (breeze block, stone, metal), as this may cause premature damage to the perimeter of the shelter.



14

- ✓ Do not bring the shelter into contact with flammable or corrosive products, as this may damage the structure.





VI – MAINTENANCE

2- Maintenance tips

Covers should be folded appropriately to maintain their watertight properties and prevent damage during storage.

You can hose down the shelter (avoid pressure washing). **Wait for the shelter to dry before storing it in the transport bag.**

Inflation is guaranteed for 48 hours. Before each use, check the inflation.

A repair kit is included in your PACK. In the event of an inner tube leak, remove the tube from the textile sleeve, paying attention to the eyelets at the ends.

15

These "eyelet" fasteners take the form of transparent plastic caps.

Clean the leak area with rubbing alcohol and leave to dry for 1 minute. Finally, apply the self-adhesive patch, pulling the bladder taut. Press the patch back and forth until it adheres, then replace the bladder in the textile sleeve, fastening the ends securely.

To ensure that the repair is complete, perform an initial inflation by isolating the freshly repaired bladder from the rest of the structure.





VII - WARRANTY CONDITIONS

The AirCaptif guarantee lasts for one (1) year.

This guarantee covers the following defects:

Leaks from a defective weld.

Valve detachment or valve leakage.

The guarantee does not cover damage resulting from incorrect assembly, incorrect use or resulting from an external cause such as :

Normal wear and tear of components.

Damage due to external aggression.

Damage caused by transport, malicious damage, poor maintenance and in particular cleaning with unsuitable products (please refer to our assembly instructions), falling trees, etc.

16

To benefit from the guarantee, please send us a photo of the product with the reference number or a copy of your invoice to:

commerce@aircaptif.com.

Please note that the commercial guarantee does not deprive you of the provisions relating to the guarantee against hidden defects (articles 1641 et seq. of the French Civil Code) or the legal guarantee of conformity (L211-1 et seq. of the French Consumer Code).

The guarantee is limited solely to the replacement of parts (excluding labour) recognised as defective by our company, without any compensation or damages being claimed for material or physical damage caused.

In the event of a return, the following information must appear on the packaging: Name and address of the sender Name and address of the user Number of our delivery note, invoice, quotation, dimensions of the shelter, reasons for the return.





VII - WARRANTY CONDITIONS

When acting under the legal guarantee of conformity, the consumer :

- ✓ has a period of two years from the date of delivery of the goods in which to take action
- ✓ may choose between repairing or replacing the goods, subject to the cost conditions set out in article L. 211-9 of the Consumer Code
- ✓ is exempt from having to prove the existence of a lack of conformity in the goods during the six months following delivery of the goods. This period is extended to twenty-four months from 18 March 2016, except for second-hand goods.

The legal guarantee of conformity applies independently of any commercial guarantee that may have been granted.

17

Consumers may also decide to invoke the warranty against hidden defects in the goods sold, as defined in article 1641 of the French Civil Code. In this case, they may choose between rescission of the sale or a reduction in the sale price in accordance with article 1644 of the French Civil Code.

Article L. 211-4 of the French Consumer Code: "The seller is obliged to deliver goods in conformity with the contract and is liable for any lack of conformity existing at the time of delivery. He shall also be liable for any lack of conformity resulting from the packaging, the assembly instructions or the installation when the latter was made his responsibility under the contract or was carried out under his responsibility".

